



# BISON

MACHINERY



**TAIZHOU BISON MACHINERY CO.,LTD.**

Add:Build D, No.1515 Fengnan East Road,jiaoJiang,  
Taizhou City, Zhejiang Province China  
Tel:0086-576-88205202

Http://www.bisonpower.net

2021-2022

ENGINE  
GENERATORS  
WATER PUMP  
HIGH PRESSURE WASHERS





**BISON**  
MACHINERY

## CATALOG

---

01-02 COMPANYPROFILE

---

03-12 GENERATOR  
GASOLINE GENERATOR  
DIESEL GENERATOR

---

13-27 HIGH PRESSURE WASHER  
GASOLINE HIGH PRESSURE WASHER  
DIESEL HIGH PRESSURE WASHER  
ELECTRIC HIGH PRESSURE WASHER  
SPARE PARTS

---

28-36 ENGINE  
GASOLINE ENGINE  
GASOLINE BRUSH CUTTER  
DIESEL ENGINE

---

37-42 WATER PUMP  
GASOLINE WATER PUMP  
DIESEL WATER PUMP

## COMPANY PROFILE

### TAIZHOU BISON MACHINERY CO., LTD.

is one of the Chinese leading manufacturers of High pressure washer, Generators, Water pumps, Engines etc. BISON brand has won its reputation among the areas like South America, Europe, Africa, Southeast Asia, by supplying qualified products and professional after-sale service. We are looking forward to establishing more win-win cooperation with customers all around the world.

We are bison machinery. This is our aim and our mission. We are working hard. When people are accustomed to the rough production of generators, We insist that the product meets the standards of art from the internal structure to the appearance.



### ALL KINDS OF SOCKETS

NO.	SHAPE	TYPE	COUNTY	NOTICC	NO.	SHAPE	TYPE	COUNTY	NOTICC	NO.	SHAPE	TYPE	COUNTY	NOTICC
1	10A 250V	A	CHINA NIGERA MIDDLE EAST	✓	2	10A 250V	U	AUSTRALIA	✓	3	15A 250V	J	JAPAN	✓
4	15A 125V	C	USA CANADA KOREA TALWAN	✓	5	20A 125V	C <sub>1</sub>	USA CANADA KOREA TALWAN	✓	6	30A 250V	C <sub>2</sub>	USA CANADA KOREA TALWAN	✓
7	20A 125V	C <sub>3</sub>	USA CANADA KOREA TALWAN	✓	8	20A 150V /250V	C <sub>4</sub>	USA CANADA KOREA TALWAN	DUAL VOLTAGE	9	30A 125V /250V	C <sub>5</sub>	USA CANADA KOREA TALWAN	DUAL VOLTAGE
10	16A 230V	G	EUROPE (EXCEPT U.K.)	✓	11	16A 230V	F	FRENCH BLEG.	✓	12	13A 230V	W <sub>1</sub>	SWISS	✓
13	16A 230V	W <sub>2</sub>	SWISS	✓	14	16A 230V	D	DANISH	✓	15	13A 250V	B	BRITISH	✓
16	16A 250V	SA	SOUTH AFRICA	✓	17	16A 250V	B <sub>1</sub>	BRITISH	DUAL VOLTAGE	18	16A 230V	B <sub>2</sub>	BRITISH	DUAL VOLTAGE



# GENERATOR



# GENERATOR

Powerful and durable OHV engine  
Durable metal fuel tank provides enough run-time to get through a full day's work  
Operates 10 0 hours@50%load Reinforced and stronger frame

## Make a generator like a work of art



10" tire wheels for all-terrain mobility  
Protected by low oil alert  
Electronic Ignition and AVR included  
Easy start, compact, fuel-efficient generator models provide smooth, clean power



Durable Protective Frame



Large Fuel Tank With Fuel Gauge



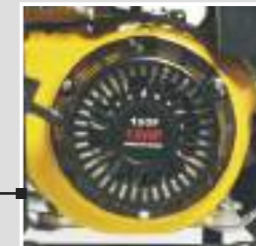
Industrial-designed Control Panel With 5 In 1 Digital Display



Magnetic Hydraulic Circuit Breaker



Powered By OHV Engine Less Noise  
Longer Service Life  
High Fuel Consumption Efficiency



Powerful Brush Copper Alternator With Avr



Well-suited Folding Handles  
High Quality Wheels



# GASOLINE GENERATOR

0.5~3.0KW

Easy start, compact, fuel-efficient provide smooth, clean power; AC/DC output & cables for 12V batteries charging.



GASOLINE GENERATOR	BS950	BS1800	BS2500	BS3000	BS3500
Rated Voltage(V)	110/220, 220/380, 230/400, 240/415				
Rated Current(A)	5.9/2.9	9.0/4.5	18/9.1	22.7/11/6.2	26/13/7
Max.Power(KW)	0.75	1.2	2.2	2.8	3.0
Rated Power COP(KW)	0.65	1	2.0	2.5	2.8
Phase	1	1	1/3	1/3	1/3
Rated Frequency(Hz)	50/60	50/60	50/60	50/60	50/60
Factor	1	1	1	1	1
Insulation grade	F	F	F	F	F
Model	1E45F	BS156F	BS168F-1	BS170F	BS170F
Type	Single Cylinder,Air-cooled,2-stroke		Single Cylinder,Air-cooled,4-stroke		
Displacement(cc)	63	93.5	196	210	210
Output power(HP)	2.0	2.6	6.5	7.0	7.0
Rated speed(RPM)	3000/3600				
Bore X stroke	45*38	56*38	68*45	70*56	70*56
Compression ratio	7.3	7.7	8.5	8.5	8.5
Starting system	Recoil/Electric Starting				
Fuel tank volume(L)	4	6	15	15	15
Mass weight(kg)	19	26	41.5	43	45
Size(LxWxH)(mm)	420*340*325	490*380*400	605*470*435	605*470*435	605*470*435
20GP(Set)	735	350	235	235	235
40HQ(Set)	1720	900	593	585	585

# GASOLINE GENERATOR

3.0~6.5KW

Easy start, compact, fuel-efficient provide smooth, clean power; AC/DC output & cables for 12V batteries charging.



GASOLINE GENERATOR	BS4500	BS5500	BS6500	BS7500
Rated Voltage(V)	110/220, 220/380, 230/400, 240/415			
Rated Current(A)	27.2/13.5/7.5	32/18.2/7	32/23/12.5	32/27/15
Max.Power(KW)	3.0	4.5	5.5	6.5
Rated Power COP(KW)	3.5	4.0	5.0	6.0
Phase	1	1/3	1/3	1/3
Rated Frequency(Hz)	50/60	50/60	50/60	50/60
Factor	1	1	1	1
Insulation grade	F	F	F	F
Model	BS177F	BS188F	BS188F	BS190F
Type	Single Cylinder, Air-cooled, 4-stroke			
Displacement(cc)	270	389	389	420
Output power(HP)	9.0	13.0	13.0	15.0
Rated speed(RPM)	3000/3600	3000/3600	3000/3600	3000/3600
Bore X stroke	77*58	88*64	88*64	90*66
Compression ratio	8.2	8.0	8.0	8.0
Starting system	RECOIL/ELECTRIC STARTING			
Fuel tank volume(L)	25	25	25	25
Mass weight(kg)	72	80	82	85
Size(LxWxH)(mm)	710*530*550	710*530*550	710*530*550	710*530*550
20GP(Set)	132	136	136	136
40HQ(Set)	292	292	292	292





DIESEL GENERATOR





Easy to operate and high safety, Electric start, Powered by 4-stroke air-cooled diesel engine. It has AVR to automatically regulate voltage, 100% copper of the alternator to ensure powerful output.



BS2500DCE



BS6500DCE

GASOLINE GENERATOR	BS2500DCE	BS3500DCE	B6500DCE	BS7500DCE	BS8500DCE	BS12000DCE
Rated frequency(Hz)	50/60	50/60	50/60	50/60	50/60	50/60
Rated voltage(V)	110/220, 220/380, 230/400, 240/415					
Max power(KW)	2.0	3.0	5.0	5.5	6.0	10
Rated power(KW)	1.8	2.8	4.5	5.0	6.5	9.0
Alternator	Copper	Copper	Copper	Copper	Copper	Copper
Factor	1	1	1	1	1	1
Phase	Single phase/Three phase					
Structure type	Open frame type					
Starting system	Key start	Key start	Key start	Key start	Key start	Key start
Fuel tank volume(L)		12.5	12.5	12.5	25	25
Model	BS170F(E)	BS178F(E)	BS186F(E)	BS188F(E)	BS192F(E)	BS292F(E)
Bore×store(mm)	70*55	78*62	86*70	88*75	92*75	92*75
Displacement(cc)	211	296	418	456	498	498
Compression ratio	20:1	20:1	19:1	19:1	19:1	21.5:1
Type	Single Cylinder,Air Cooled,			Air Cooled;Two Cylinder		
Ignition system	Compression combustion					
Noise level(dB)	77	77	77	77	84	84
G.W.(kg)	58	74	95	100	105	170
Dimension(mm)	760*520*620	760*520*620	760*520*620	760*520*620	760*520*620	885*650*745

Easy to operate and high safety, Electric start, Powered by 4-stroke air-cooled diesel engine. It has AVR to automatically regulate voltage. Adopt more efficient silencer and sponge to ensure more silent.



BS6500DSE



BS6500DSE(A)



BS6500DSE(B)

GASOLINE GENERATOR	BS3500DSE	BS5000DSE	B6500DSE	BS7500DSE	BS8500DSE	BS12000DSE
Rated frequency(Hz)	50/60	50/60	50/60	50/60	50/60	50/60
Rated voltage(V)	110/220/380	110/220/380	110/220/380	110/220/380	110/220/380	110/220/380
Max power(KW)	3.0	4.6	5.0	5.5	6.5	10
Rated power(KW)	2.8	4.2	4.5	5.0	6.0	9.0
Alternator	Copper	Copper	Copper	Copper	Copper	Copper
Factor	1	1	1	1	1	1
Phase	Single phase/Three phase					
Starting system	Electric start	Electric start	Electric start	Electric start	Electric start	Electric start
Fuel tank volume(L)	15	15	15	15	15	25
Model	BS178F(E)	BS186F(E)	BS186FA(E)	BS188F(E)	BS192F(E)	BS292F(E)
Bore×store(mm)	78*62	86*70	86*72	88*75	92*75	92*75
Displacement(cc)	296	406	418	456	498	498
Compression ratio	20:1	19:1	19:1	19:1	19:1	21.5:1
Type	Single Cylinder,Air Cooled					
Ignition system	Compression combustion					
Noise level(dB)	72	72	72	72	72	70
G.W.(kg)	142	152	155	158	163	280
Dimension(mm)	950*530*700	950*530*700	950*530*700	950*530*700	950*530*700	1180*720*1030





# HIGH PRESSURE WASHER



Powerful And Durable Ohv Engine  
Low Oil Shutdown System To Protect Engine  
Professional High Pressure Hose  
With Quick Connect For Fast

## Self Suction Function For Your Easy Work

Suitable For Car Cleaning ,  
Construction Sites,lumber Mills,  
Kitchens, Shipyards,  
Cleaning Floors And So On.



Appearance patent design



Foam tank optional



Super-rugged frame



Strengthen security framework type anti-shockdesign



Maximum 25 meters reach



Self-priming patent copper pump



12 inch All-Terrain Rubber wheels



# HIGH PRESSURE WASHER

## Swash plate pump

Professional high pressure nozzles.  
high pressure hose with quick connect for fast assembly.  
self suction function for your option.

HIGH PRESSURE WASHER	BS-170A/B	BS-180A/B
Pressure	150-170Bar/2200-2500PSI	180-200Bar/2600-2900PSI
Max Flow	9LPM/2.4GPM	9LPM/2.4GPM
Power	6.5HP/196cc	6.5HP/196cc
Speed	3400RPM	3400RPM
Start	Recoil Start	Recoil Start
Pump modle	BSP170	BSP180
Pump head	Aluminum	Brass
Gross weight(kg)	30	31.5
Size(L×W×H)(mm)	560*475*535	560*475*535
20GP	192	192
40GP	500	500



A



B



# HIGH PRESSURE WASHER

## Swash plate pump

Professional high pressure nozzles.  
high pressure hose with quick connect for fast assembly.  
self suction function for your option.



HIGH PRESSURE WASHER	BS-170 C/D/L/NA/NB/NC	BS-180 C/D/L/NA/NB/NC
Pressure	150-170Bar/2200-2500PSI	180-200Bar/2600-2900PSI
Flow	9LPM/2.4GPM	9LPM/2.4GPM
Power	6.5HP/196cc	6.5HP/196cc
Speed	3400RPM	3400RPM
Start	Recoil Start	Recoil Start
Pump modle	BSP170	BSP180
Pump head	Aluminum	Brass
Gross weight(kg)	31/30/35/31/34/30	32/31.5/36/32/36/31.5
Size(L×W×H)(mm)	620*450*535/560*540*635/ 830*420*465/520*520*535/ 830*440*535/520*430*630	620*450*535/560*540*635/ 830*420*465/520*520*535/ 830*440*535/520*430*630
20GP	220/132/195/220/140	132/220/195/220/140
40GP	575/352/468/575/350	352/575/468/575/350

**HIGH PRESSURE  
WASHER**

**Crankshaft pump**

Professional High Pressure Nozzles. High Pressure Hose With Quick Connect For Fast Assembly. Self Suction Function For Your Option.

HIGH PRESSURE WASHER	BS-G150A/B	BS-G200A/B	BS-G250A/B
Pressure	150Bar-2200PSI	200Bar-2900PSI	250Bar-3600PSI
Flow	12.6LPM/3.4GPM	15LPM/4GPM	15LPM/4GPM
Power	7HP/210cc	13HP/390cc	15HP/420cc
Speed	3400RPM	3400RPM	3400RPM
Start	Recoil Start	Recoil Start	Recoil Start/Electric Start
Pump modle	PG200	PG200	PG250
Pump head / material	Brass	Brass	Brass
Gross weight(kg)	36	50	58
Size(L×W×H)(mm)	650*410*520	720*580*620	720*580*620
20GP	200	90	90
40GP	525	240	240



A



B



**HIGH PRESSURE  
WASHER**

**Crankshaft pump**

Easy Start, Compact, Fuel-efficient Provide Smooth.clean Power. Ac/dc Output&cables For 12v Batteries Charging.



A



B

HIGH PRESSURE WASHER	BS-DE200A/B	BS-DE250A/B
Pressure	170Bar-2500PSI	250Bar-3600PSI
Flow	15LPM/4GPM	15LPM/4GPM
Power	6HP/296cc	10HP/418cc
Speed	3400RPM	3400RPM
Start	Recoil Start/Electric Start	Recoil Start/Electric Start
Pump modle	PG200	PG250
Pump head / material	Brass	Brass
Gross weight(kg)	64/83	74/93
Size(L×W×H)(mm)	760*580*620/840*530*660	760*580*620/840*530*660
20GP	90/87	90/87
40GP	240/232	240/232

**Electric SINGLE PHASE**

1. Industrial grade induction with good start performance and low noise .
2. 100% copper wire ,aluminum housing
3. IP55 water proof,built-in over-current ,leakage protection
4. Triplex plunger pump with pressure gauge
5. On-off switch ,auto start and stop function



HIGH PRESSURE WASHER	ES2.2-2	ES3-2	ES2.2-4	ES3-4
Working pressure	100Bar/1450PSI	140Bar/2030PSI	100Bar/1450PSI	140Bar/2030PSI
Flow	12.6LPM/3.4GPM			
Power	2.2kw	3kw	2.2kw	3kw
Voltage frequency	Single phase 220V/50Hz or 220V/60Hz			
Speed	2900RPM	2900RPM	1450RPM	1450RPM
Gross weight(kg)	46kg	48kg	52kg	56kg
Size(L×W×H)(mm)	780*480*380mm			
20GP	216	216	216	216
40GP	432	432	432	432

**THREE PHASE**

**Electric**

1. Industrial grade induction with good start performance and low noise .
2. 100% copper wire ,aluminum housing
3. IP55 water proof,built-in over-current ,leakage protection
4. Triplex plunger pump with pressure gauge
5. On-off switch ,auto start and stop function



HIGH PRESSURE WASHER	ET2.2-4	ET3-4	ET4-4
Working pressure	80-100Bar 1160-1450PSI	120-140Bar 1740-2030PSI	186-200Bar 2700-2900PSI
Flow	12.6LPM/3.4GPM	12.6LPM/3.4GPM	12.6LPM/3.4GPM
Power	2.2kw	3kw	4kw
Voltage frequency	Three phases 380V/50Hz or 60Hz		
Speed	1450RPM	1450RPM	1450RPM
Gross weight(kg)	53kg	57kg	69kg
Size(L×W×H)(mm)	780*480*380mm	780*480*380mm	780*480*380mm
20GP	216	216	216
40GP	432	432	432



## Electric THRESS PHASE



BS-ET

1. Industrial grade induction with good start performance and low noise .
2. 100% copper wire ,aluminum housing
3. IP55 water proof,built-in over-current ,leakage protection
4. Triplex plunger pump with pressure gauge
5. On-off switch ,auto start and stop function



HIGH PRESSURE WASHER	ET5.5-4A	ET7.5-4A
Working pressure	250Bar/3600PSI	250Bar/2200PSI
Flow	12.6LPM/3.4GPM	15LPM/4GPM
Power	5.5kw	7.5kw
Voltage frequency	Three phases	380V/50Hz or 60Hz
Speed	1450RPM	1450RPM
Gross weight(kg)	85kg	88kg
Size(L×W×H)(mm)	880*490*450mm	880*490*450mm
20GP	112	224
40GP	432	432

## Electric PUMP

1. Engine drive
2. Stainless steel plunger
3. Internal return water pressure relief
4. Thermal protection valve
5. Self-priming



BS-P170



BS-P180

Aluminum Swashplate Pump	Pump Type	RPM	Shaft Hole Diameter (mm)	Maxing pressure (Bar)	Flow	Inlet Connector	Outlet Connector	G.W.(kg)	Dimension(mm)
P170	Aluminum	3400	16/19.05	190	9LPM	Quick connector	M22-inside diameter 14mm	2.3	360*180*200
P180	brass	3400	19.05	200	9LPM	Quick connector	M22-inside diameter 14mm	3.2	360*180*200

## Electric PUMP

### PUMP FEATURES:

- 1.Engine drive
- 2.Anodized crankcase
- 3.Forged brass cylinder
- 4.Ceramic plunger
- 5.Pressure adjustable
- 6.Built-in self suction unloader

### OPTIONAL:

- 1.Fixed rate chemical injector
- 2.Pressure gauge



BS-PG200



BS-PG250

Aluminum Swashplate Pump	Pump Type	RPM	Shaft Hole Diameter (mm)	Maxing pressure (Bar)	Flow	Inlet Connector	Outlet Connector	G.W.(kg)	Dimension(mm)
PG200	Plunger	3400	19.05/25.4	220	15LPM	Quick connector	M22-inside diameter 14mm	7.0	390*270*250
PG250	Plunger	3400	25.4	275	15/18LPM	Quick connector	3/8 Brass quick connect	9.0	390*270*250



**PUMP FEATURES:**

1. Motor drive
2. Anodized crankcase
3. Forged brass cylinder
4. Ceramic plunger
5. Pressure adjustable
6. Built-in self suction unloader
7. Quick connect outlet



BS-PE180

**OPTIONAL:**

1. Fixed chemical injector
2. Pressure gauge
3. Thermal relief valve



BS-PE200



BS-PE250

Aluminum Swashplate Pump	Pump Type	RPM	Shaft Hole Diameter (mm)	Maxing pressure (Bar)	Flow	Inlet Connector	Outlet Connector	G.W.(kg)	Dimension(mm)
PE180	Plunger	2800	24	200	12.6LPM	Quick connector	M22-inside diameter14mm	5.0	360*180*200
PE200	Plunger	1450	24/28	220	12.6LPM	Quick connector	M22-inside diameter14mm	7.0	360*180*200
PE250	Plunger	1450	28	275	12.6/15LPM	Quick connector	3/8 Brass quick connect	9.0	360*180*200



M22 1.5    M14 1.5-M    3/8-M    3/8-F

MODEL	Max.Pressure PSI	OD mm	Inlet		Outlet	
BS-H01	2500	11	M22 1.5		M14 1.5-M	
BS-H02	2500	14	M22 1.5		M14 1.5-M	
BS-H03	2900	14	3/8-M	M22 1.5	3/8-F	M14 1.5-M
BS-H04	3600	18	3/8-M	M22 1.5	3/8-F	M14 1.5-M



Hose reel

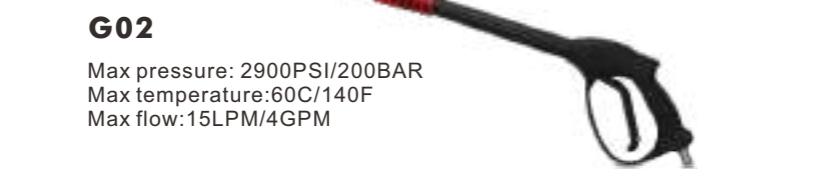


Water inlet hose

**HIGH PRESSURE  
WASHER**



**G01**  
Max pressure: 4000PSI/275BAR  
Max temperature:60C/140F  
Max flow:18LPM/6GPM



**G02**  
Max pressure: 2900PSI/200BAR  
Max temperature:60C/140F  
Max flow:15LPM/4GPM



Turbo nozzle  
Max pressure: 4000PSI



Turbo nozzle  
Max pressure: 3000PSI



U Spary gun pole



J Spary gun pole

0 15 25 40 Chemical nozzle

Stainless steel nozzle



Sewer clean nozzle



Surface cleaner BSSC15A



Soap bottle volume 1 L



Surface cleaner BSSC15B

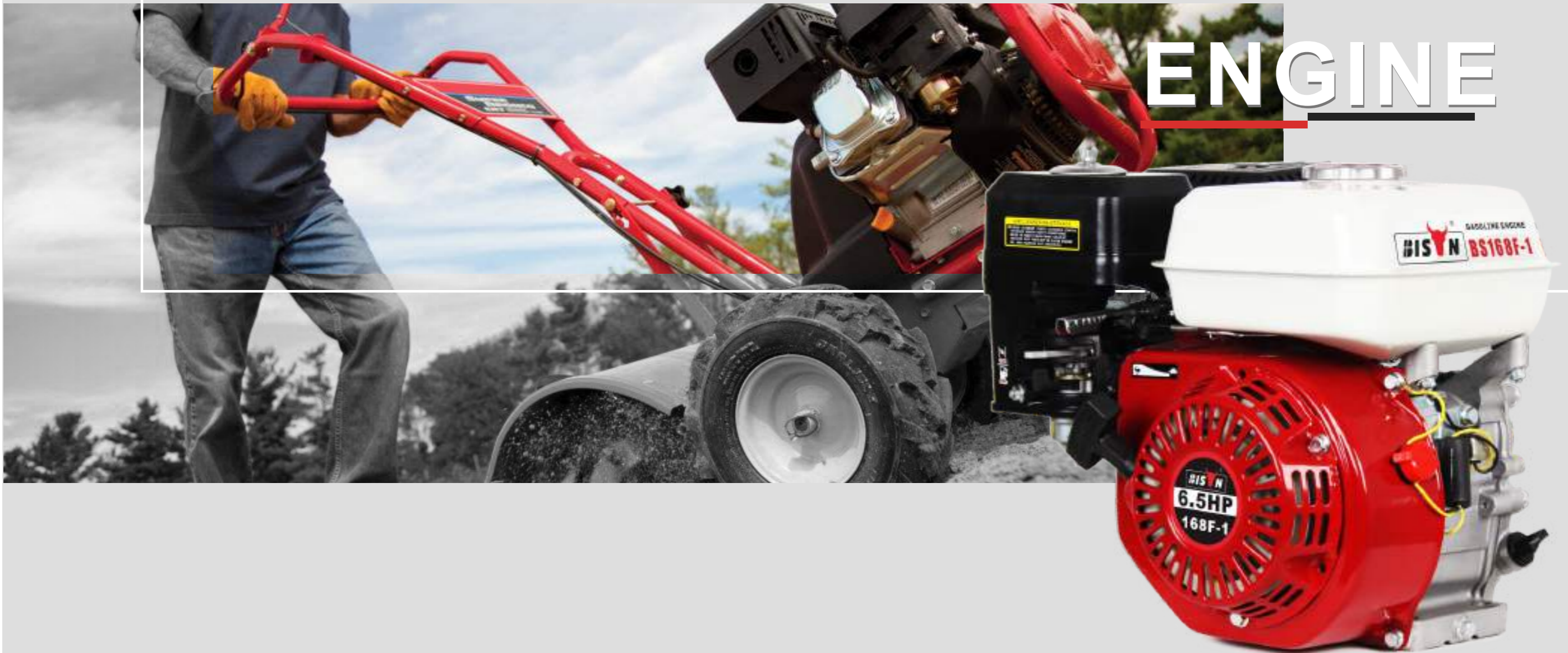


Surface Cleaner

GASOLINE ENGINE	BS188F/BS190F		S		Q		P		V
	BS177F		S		Q		P		V
	BS168F/BS170F		S		Q		P		V
DIESEL ENGINE	BS186F/BS186FA		F-A		F-B		P1		G3
	BS178		F-A		F-C		P1		G3
	BS170		F-A		F-B		P1		G1



# ENGINE



# ENGINE

Powerful and durable OHV 4-stroke engine.  
Compact & light-weight, smooth running with minimal vibration.  
Oil alert built-in, multi-choice for PTO shafts.  
Electric start, color & other OEM service optional.

## Strong power Double output



Low oil shutdown system.  
Excellent combustion efficiency to produce high economic benefits.  
Stability of horse power.  
Regulation system and warning system, safe to use.



OEM optional



Quick Start



Stable performance



Oil alarm



EURO V certification optional



Key start optional



1/2 reduction(with chain)



# GASOLINE ENGINE

**0.5~3.0KW**

Excellent combustion efficiency to produce high economic benefits. Regulation system and warning system, safe to use.



BS168F-1

GASOLINE ENGINE	BS156	BS168F	BS168F-1	BS170F	BS177F	BS188F	BS190F	BS192F
Type	Single Cylinder,Air-cooled,4-stroke,OHV							
Displacement(cc)	93.5	163	196	210	270	389	420	439
Output(HP)	2.6	5.5	6.5	7.0	9.0	13	15	18
Max power(KW)	1.7	4.1	4.8	5.1	6.6	9.6	11.0	13.2
Rated power(KW)	1.3	3.0	4.3	4.4	5.5	8.6	9.6	11.8
Rated speed(RPM)	3000/3600							
Bore*stroke(mm)	56*38	68*45	68*54	70*54/56	77*58	88*64	90*66	92*66
Compression ratio	7.7	8.5	8.5	8.5	8.2	8.0	8.0	8.0
Ignition system	T.C.I							
Starting system	Recoil/Electric Staring							
Fuel tank volume(L)	1.6	3.6	3.6	3.6	6.5	6.5	6.5	6.5
G.W. (kg)	10.6	15	16	17	28	33	34	36
Dimension(mm)	300*290*280	390*330*340		505*415*475				
20GP(set)	1100	630	630	630	275	275	275	275
40HQ(set)	2300	1505	1505	1505	690	690	690	690

# GASOLINE BRUSH CUTTER



Eliminate the honeycomb hemp surface of the concrete. After vibrating, the structure of the concrete is uniform, the strength is increased, it is stronger, it is weatherproof, and it is suitable for various construction environments.



BS5.5VB

Model	BS5.5VB
Engine Type	(1-CYLINDER,4 STROKE,Air-cooled gasoline engine)
Displacement	183ml(mm)
Continuous Output	2.6KW/3600rpm(3.5HP/3600rpm)
Maximun Output	3.7KW/4000rpm(5HP/3600rpm)
Direction of Rotation	Clockwise,as viewed from flywheel side
Lubricant	Automotive,detergent oil
Fuel	Gasoline(unleaded)
Fuel Tank capacity	3.8Liters
Starting System	Recoil Starting
Spark Plug	E6C(NGK)
N.W	20KG
G.W	21KG
DIMENSIONS	510*350*480MM



BS20VB

Model	BS20VB
Engine Type	(1-CYLINDER,4 STROKE,Air-cooled gasoline engine)
Engine	Robin ey-20 or other
Vibrating Frequency	12000V.P.M
Vibrator Head Dimension	8*450MM
Length of Pipe	4-6M
Operation Weight	20/21KG
Package Weight	27/28KG
Package Size(L*W*M)	510*380*420MM

# DIESEL ENGINE



Excellent combustion efficiency to produce high economic benefits.  
Regulation system and warning system, safe to use.



BS170F(E)



BS186F(E)

DIESEL ENGINE	BS170F(E)	BS178F(E)	BS186FA(E)	BS188F(E)
Type	Single-Cylinder, Air Cooled, 4-Stroke			
Displacement(cc)	211	296	418	456
Output(HP)	4.0	6.0	10	11
Max power(KW)	3.0	4.6	7.1	8.0
Rated power(KW)	2.5	4.2	6.5	7.5
Rated speed(RPM)	3000 / 3600	3000 / 3600	3000 / 3600	3000 / 3600
Bore×stroke(mm)	70*55	78*62	86*72	88*75
Compression ratio	20: 1	20: 1	19: 1	19: 1
Ignition system	Compression Combustion			
Starting system	Recoil start / Key start			
Fuel tank volume(L)	2.5	3.5	5.5	5.5
G.W. (kg)	27	33	48	49
Dimension(mm)	455*375*490	485*420*520	520*520*565	520*520*565
20GP(set)	330	260	180	180
40HQ(set)	640	500	350	350



# GENERATOR WATER PUMP



## GASOLINE WATER PUMP



Easy to operate and high safety, Electric start, Powered by 4-stroke air-cooled diesel engine. It has AVR to automatically regulate voltage, 100% copper of the alternator to ensure powerful output.



GASOLINE WATER PUMP	BS15	BS20	BS30	BS40A	BS40B
Inlet and outlet size(mm)	40(1.5")	50(2.0")	80(30")	100(4.0")	100(4.0")
Pump lift(m)	20	28	30	25	30
Suction height(m)	7	8	8	7	8
Flux(m <sup>3</sup> /h)	20	36	60	75	90
Model	BS156F	BS168F-1	BS168F-1	BS170	BS177F
Type	Single Cylinder, Air-cooled, 4-stroke				
Displacement(cc)	93.5	196	196	210	270
Max power(KW)	2.0	5.2	5.2	5.6	7.2
Rated power(KW)	1.8	4.7	4.7	5.1	6.6
Rated speed(RPM)	3000/3600	3000/3600	3000/3600	3000/3600	3000/3600
Bore×stroke(mm)	56*38	68*54	68*54	70*54	77*58
Compression ratio	7.7	8.5	8.5	8.5	8.2
Fuel tank volume(L)	1.6	3.6	3.6	3.6	6.5
Mass weight(kg)	22	28	30	39	49
Size(L×W×H)(mm)	420*335*335	488*390*408	510*390*431	605*435*480	635*455*545
20GP(Set)	686	385	330	160	144
40GP(Set)	1568	900	828	402	375

## GASOLINE WATER PUMP

Aluminum alloy high pressure casting. Big volume water discharge. High effective mechanical seal. Compact in structure and light in weight.



GASOLINE WATER PUMP	BS15i-171	BS20i-175	BS20i-198	BS30i-188	BS30i-208	BS3/4i-150	BS40i-150
In/outlet size(mm)	40/40	50/50	50/50	80/80	80/80	100/80	100/100
Pump lift(m)	65	75	85	80	90	55	50
Flux(m <sup>3</sup> /h)	22	30	35	40.4	40	90	115
Impeller	171	175	198	188	208	150	150
Model	BS168F-1	BS170F	BS177F	BS188F	BS188F	BS188F	BS192F
Output(HP)	6.5	7.0	9.0	13	13	13	17
Bore stroke(mm)	68*54	70*54	77*58	88*64	88*64	88*64	92*66
Displacement(cc)	163	210	270	390	390	390	420
Type	Single Cylinder, Air Cooled, 4 Stroke						
Rated speed(RPM)	3000/3600	3000/3600	3000/3600	3000/3600	3000/3600	3000/3600	3000/3600
Starting system	Recoil Starting						
Fuel tank capacity(L)	3.6	3.6	6	6.5	6.5	6.5	6.5
N.W./G.W.(kg)	27/28	29/30	39/40	57/59.5	59/61	61/62.5	61.5/64
Dimension(m <sup>3</sup> /h)	490*380*400	510*390*415	635*465*520	635*465*520	635*465*520	635*465*520	635*465*520
20FT/40HQ(set)	360/864	330/828	180/380	180/380	180/380	180/380	180/380





Eliminate the honeycomb hemp surface of the concrete. After vibrating, the structure of the concrete is uniform, the strength is increased, it is stronger, it is weatherproof, and it is suitable for various construction environments.



Eliminate the honeycomb hemp surface of the concrete. After vibrating, the structure of the concrete is uniform, the strength is increased, it is stronger, it is weatherproof, and it is suitable for various construction environments.



**HIGH PRESSURE PUMP**

Model	BS15H	BS20H	BS30H
Inlet and outlet size(mm)	40(1.5")	50(2.0")	80(3.0")
Pump lift(m)	55	50	25
Suction height(m)	6	7	7
Flux(m <sup>3</sup> /h)	35	42	75
Impeller	Single	Single	Single

Model	BS168F-1	BS170F	BS188F
Type	Single Cylinder, Air-cooled, 4-stroke		
Displacement(cc)	196	210	390
Max power(KW)	5.2	5.6	10.5
Rated power(KW)	4.7	5.1	9.5
Rated speed(RPM)	3000/3600	3000/3600	3000/3600
Bore×stroke(mm)	68*54	70*56	88*64
Compression ratio	8.5	8.5	8.0
Ignition system	T.C.I	T.C.I	T.C.I
Fuel tank volume(L)	3.6	3.6	6.5
Mass weight(kg)	26	28	33
Size(L×W×H)(mm)	488*390*408	510*390*431	
20GP	385	385	275
40HQ	900	900	690



**CAST IRON HIGH PRESSURE PUMP**

Model	BS20E	BS30E
Inlet Size(mm)	63.5(2.5")	80(3.0")
Outlet Size(mm)	50(2.0")	80(3.0")
Pump Lift(mm)	60	35
Suction Height(m)	7	7
Displacement(m3)	35	45

Model	170F	BS170F
Type	4-Stroke, Single-Cylinder, Air Cooled, Direct Injection	
Displacement(CC)	210	210
Power(HP)	7.0	7.0
Rated Speed(RPM)	3000/3600	3000/3600
Bore×Stroke(mm)	70*54	70*54
Compression Ratio	8.5	8.5
Ignition System	T.C.I	T.C.I
Starting System	Recoil	Recoil
G.W(kg)	24kgs	28kgs
Packing Size(mm)	510*390*440	510*390*440
20GP(Set)	330	330
40HQ(Set)	820	820



**CHEMICAL PUMP**

Model	BS20C	BS30C
Inlet and outlet size(mm)	50(2.0")	80(3.0")
Pump lift(m)	30	20
Suction height(m)	7	7
Flux(m <sup>3</sup> /h)	35	60
Impeller	Single	Single

Model	BS168F-1	BS168F-1
Type	Single Cylinder, Air-cooled, 4-stroke	
Displacement(cc)	196	196
Max power(KW)	4.8	4.8
Rated power(KW)	4.3	4.3
Rated speed(RPM)	3000/3600	3000/3600
Bore×stroke(mm)	68*54	68*54
Compression ratio	8.5	8.5
Ignition system	T.C.I	T.C.I
Fuel tank volume(L)	3.6	3.6
Mass weight(kg)	26	27
Size(L×W×H)(mm)	488*390*408	488*390*408
20FT(Set)	385	385
40HQ(Set)	900	900



**TRASH PUMP**

Model	BS30T	BS40T
Inlet and outlet size(mm)	80(3.0")	100(4.0")
Pump lift(m)	25	25
Suction height(m)	7	7
Flux(m <sup>3</sup> /h)	45	80
Impeller	Single	Single

Model	BS170F	BS188F
Type	Single Cylinder, Air-cooled, 4-stroke	
Displacement(cc)	210	389
Max power(KW)	5.7	9.6
Rated power(KW)	5.5	8.6
Rated speed(RPM)	3000/3600	3000/3600
Bore×stroke(mm)	70*56	88*64
Compression ratio	8.2	8.0
Ignition system	T.C.I	T.C.I
Fuel tank volume(L)	3.6	6.5
Mass weight(kg)	49	49
Size(L×W×H)(mm)	635*455*545	635*455*545
20FT(Set)	144	144
40HQ(Set)	375	375

# DIESEL WATER PUMP

Long working hours, high efficiency, reasonable structure, low operating cost, convenient installation and maintenance

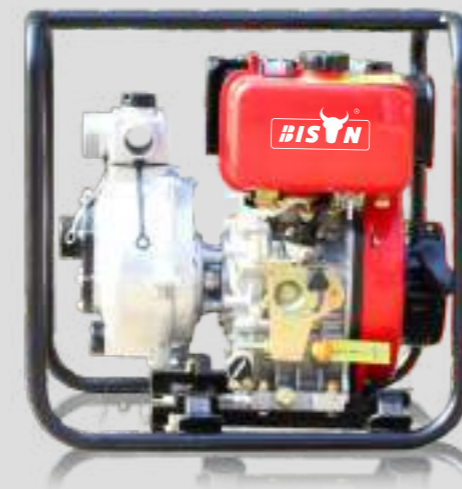


DIESEL WATER PUMP	BSD20	BSD30	BSD40	BSD40(E)
In/outlet size(mm)	50(2.0")	80(3.0")	100(4.0")	100(4.0")
Pump lift(m)	26	25	31	31
Suction height(m)	8	8	8	8
Flux(m /h)	36	50	96	96
Model	BS170F(E)	BS178F(E)	BS186F(E)	BS186F(E)
Output(kw)	2.5	4.0	6.3	6.3
Bore stroke(mm)	70*55	78*62	86*70	86*70
Displacement(cc)	211	296	406	406
Type	Single Cylinder, Air Cooled, 4 Stroke			
Compression ratio	20:1	20:1	19:1	19:1
Rated speed(RPM)	3000/3600	3000/3600	3000/3600	3000/3600
Starting system	Recoil start / Key start			
Fuel tank capacity(L)	2.5	3.5	5.5	5.5
N.W./G.W.(kg)	35 / 37	52 / 54	64 / 67	69 / 72
Dimension(m <sup>3</sup> /h)	500*420*500	560*440*550	650*480*600	650*500*740

# DIESEL WATER PUMP



Long working hours, high efficiency, reasonable structure, low operating cost, convenient installation and maintenance



## HIGH PRESSURE DIESEL WATER PUMP

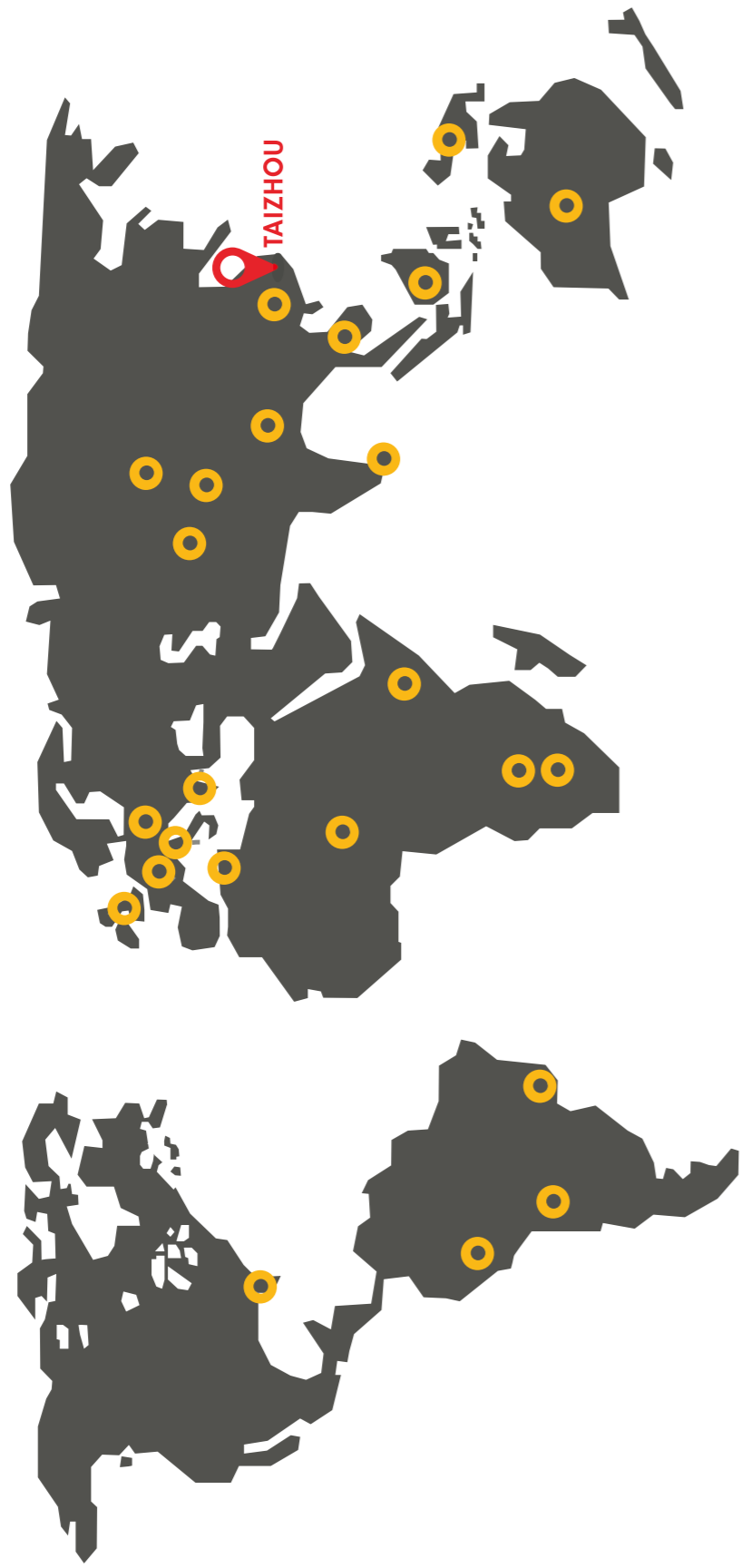
Model	BS20H	BS30H
In/outlet size(mm)	50(2.0")	80(3.0")
Pump lift(m)	55	36
Suction height(m)	8	8
Flux(m /h)	26	38
Model	BS186F(E)	BS186F(E)
Output(kw)	6.3	6.3
Bore stroke(mm)	86*70	86*70
Displacement(cc)	406	406
Type	Single Cylinder, Air Cooled, 4 Stroke	
Compression ratio	19:1	19:1
Rated speed(RPM)	3000/3600	3000/3600
Starting system	Recoil start/Key start	
Fuel tank capacity(L)	5.5	5.5
N.W./G.W.(kg)	64 / 67	69 / 72
Dimension(m <sup>3</sup> /h)	560*440*520	560*440*550



## HIGH PRESSURE CAST IRON DIESEL WATER PUMP

Model	BS20I	BS30I
In/outlet size(mm)	50(2.0")	80(3.0")
Pump lift(m)	75	80
Suction height(m)	7	7
Flux(m /h)	30	41
Model	BS186F(E)	BS186FA(E)
Output(kw)	6.3	8.2
Bore stroke(mm)	86*70	86*72
Displacement(cc)	406	499
Type	Single Cylinder, Air Cooled, 4 Stroke	
Starting system	Recoil start/Key start	
Fuel tank capacity(L)	5.5	5.5
N.W./G.W.(kg)	64 / 67	69 / 72
Dimension(m <sup>3</sup> /h)	560*440*520	560*440*550

# BISON BRAND DISTRIBUTION MAP



- CHINA
- THAILAND
- CAMBODIA
- NEW ZEALAND
- AUSTRALIA
- SAUDI ARABIA
- NIGERIA
- EGYPT
- ETHIOPIA
- SOUTH AFRICA
- ITALY
- UK
- GERMANY
- RUSSIA
- PERU
- ARGENTINA

2021-2022



# BISON

MACHINERY